

ALBANY

RR200 UltraSeal SS

GRAVITY-DRIVEN STAINLESS STEEL DOOR



Roll up doors at your service
www.albanydoors.us

ALBANY 

RR200 UltraSeal SS

GRAVITY-DRIVEN STAINLESS STEEL DOOR

Fast. Reliable. Safe.

This high-speed door is engineered to provide safe, quiet and efficient operation when high cycle operation and controlling environments are critical. Full stainless steel construction and a state of the art wash-down drive system provide years of reliable service in demanding hygienic applications. High speed operation, ultra-tight seal and soft curtain technology provide outstanding environmental control as well as safety for people and equipment.

WHY OUR DOOR

Designed for Sanitary Environments

- Constructed of a stainless steel and USDA/ FDA compliant curtain and features a wash-down drive system that makes maintaining a sanitary environment simple.
- Features patented bead tech for easy cleaning and is virtually free of particulate generation, as it doesn't require auxiliary weather stripping.

Superior Sealing

- Utilizes patented bead technology for an ultra-tight seal and smooth, quiet operation, while minimizing infiltration of contamination and humidity.
- Combined with high speeds and encapsulating side guides, the door reduces unwanted air transfer for energy savings.

Gravity-Driven Technology

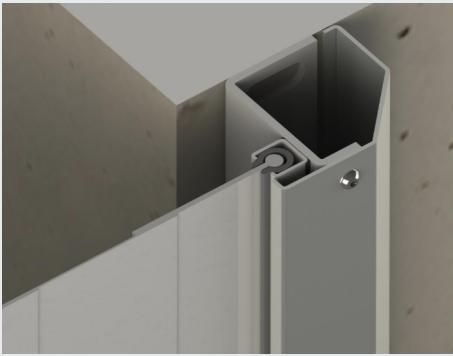
- Enhance operations with opening speeds of up to 72" per second, while our unique gravity driven technology closes the door with the weight in the curtain at up to 24" per second.
- Patented low friction technology facilitates efficient operations, while soft bottom edge helps protect people in the case of accidental impact.



Hoods shown are optional.

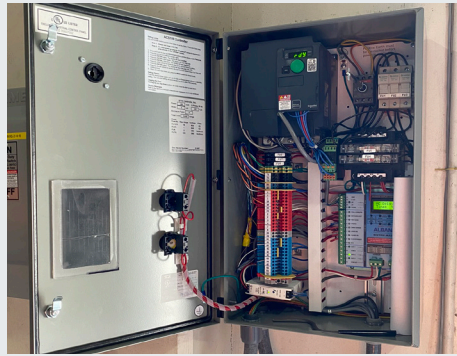


Doors You Trust. Features You Can Count On.



Encapsulated Technology

For smooth operation, our patented encapsulated tech eliminates the need for weather stripping and is easy to maintain.



Modular Industrial Design

The new and improved ACS 100 control panel features multiple activation and a streamlined system for smooth operations.



Re-Introduction Block

The patented reintroduction design pivots with curtain movement and provides reliable and smooth re-insertion.

DOOR CHARACTERISTICS

Door Dimensions	Maximum: 12'W x 12'H
Operating Speeds	Open: Up to 72" per second Closing: Up to 24" per second
Sensing Devices	Standard IP67 photoeyes installed 12" above finished floor automatically reverses curtain when obstruction is detected Wireless reversing edge reverses curtain if it meets an obstruction during the closing cycle.
Side Guides	Outer: Stainless steel structural channels Inner: Reinforced Polyethylene (PE-UHMW 1000)
Door Operation	Gravity driven with flexible curtain
Door Curtain	Chemical resistant PVC (27 oz/sq.yd.) and continuous sealing bead, with flexible ballast soft bottom edge. USDA / FDA compliant
Vision	One vision banner 15" high x door width. Optional configurations available
Motor NEMA4	1 HP, IP 65 rated motor is VFD driven, with 2 poles and mechanical braking. 5 year unlimited cycle drive warranty.

The Albany Difference

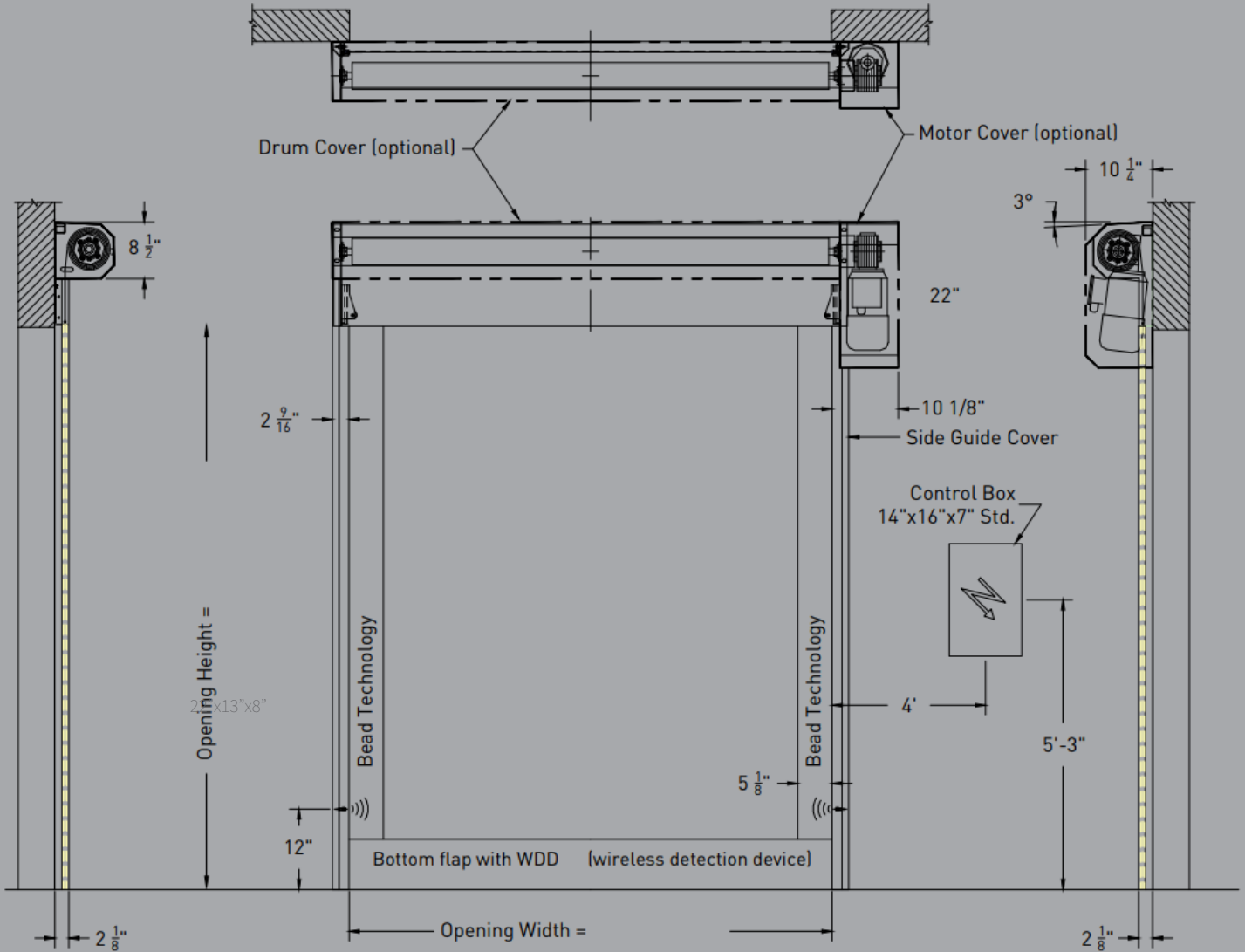
From the inventors of the original Rapid Roll™ door, Albany High Performance Doors are strong, fast, and safe. With simplicity in design, few moving parts, and speed, our rapid roll doors maximize productivity and savings for our customers. Companies count on Albany due to our decades of experience, superior performance and products, and the global leader in entrance automation that stands behind us, 4Front Engineered Solutions.

POWER SUPPLY

Control Box	Single phase 110 VAC (up to 130 sq.ft.) Single phase 208-230 VAC; Three phase 208-230 VAC; Three phase 460 AC Three phase 575VAC Frequency: 50-60 Hz Stainless steel control box 22"x13"x8" (NEMA 4X) ASC100 control system Variable frequency drive E-stop, Electrical disconnect
-------------	---

RR200 UltraSeal SS

GRAVITY-DRIVEN STAINLESS STEEL DOOR



All indicated dimensions are net: the space necessary for mounting and maintenance has to be provided.
REMARK: based on the risk analysis of the environment, extra push buttons, detectors and covers might be required.

Founded in 1895 as Albany International in the USA, Albany began manufacturing the first high-performance roll door in 1963. Today, Albany is the world leader in the production of high-speed and high-performance doors. Providing sophisticated products that are designed for a wide range of applications in various industries, Albany remains the original high-performance roll-up door.

Door specifications and technical data subject to change without notice.

© ASSA ABLOY. ALL RIGHTS RESERVED. Part of ASSA ABLOY.

ALBANY

935 Campus Drive
Mundelein, IL 60060
P: 1-800-459-1930
www.albanydoors.us